

BMA PROJECT PROFILE

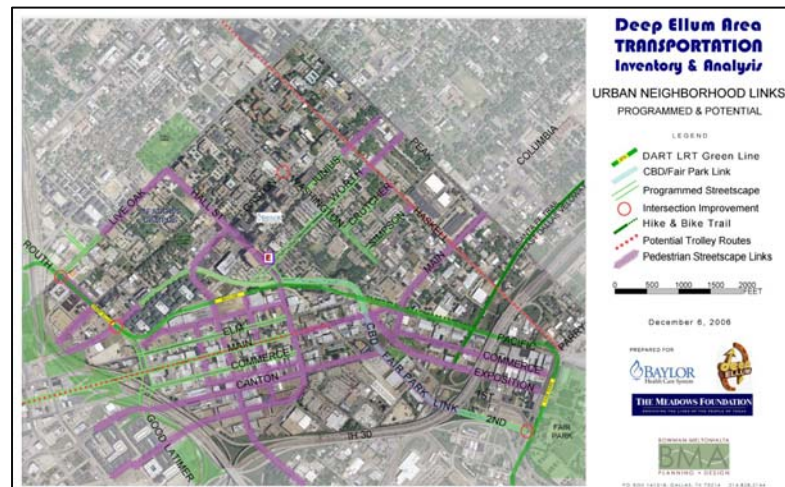
## Deep Ellum Transportation Inventory and Analysis

By providing a tool for tracking current and future transportation projects within the area, *The Deep Ellum Area Transportation Inventory and Analysis* project facilitated key stakeholders efforts to impact the direction of transportation initiatives underway within this historical district, located just east of Downtown Dallas.

BMA developed a large scale, geo-coded base map inventorying current and future (TxDOT, DART, and City) transportation projects' status (proposed, recommended, adopted plan, programmed project, or construction phase) by facility type (DART LRT and bus routes, TxDOT limited access highways, City streets, trails, and sidewalks). From master plans to highway schematics previous efforts were summarized and mapped. Additionally, both public and private parking availability was inventoried, together with locations of major developments and redevelopments. Information was mapped together with hyperlinks to related planning and project documents. Transportation-related information collected from City CIP, City annual budget items, and bond program projects; County annual budget items; TxDOT studies and construction projects; DART CIP and annual budget items; Deep Ellum TIF and PID initiatives.

An analysis map was developed for existing, programmed and potential neighborhood links using an aerial photo depicting existing conditions and plans, together with needs, gaps and issues identified during the inventory phase.

The summary report documents issues to be resolved, alternative recommendations, scheduling, and funding status. This information was provided, together with a Critical Path Method (CPM) schedule in a spreadsheet matrix of major and minor projects keyed to the map, identifying the transportation project contact person, and providing hyperlinks to available websites on current projects.



**Client:** Baylor Hospital, Deep Ellum Foundation, and Meadows Foundation  
**Year:** 2006  
**Project Manager:** Annie Melton, AICP